

INTERNATIONAL WOMEN'S DAY



President's welcome

March, the first month of autumn, is always a busy time, marked by many International Women's Day events that celebrate the contribution women make to society, while also highlighting the challenges that remain.

This year's theme, **Give to Gain**, speaks to the power of reciprocity and support.

Maybanke would not be able to support so many women and their children without the generosity of our donors, sponsors and volunteers. Later in this newsletter, we share the many ways your support makes a difference, and how every dollar goes directly to assisting women and children. Thank you to everyone who has supported Maybanke—your contribution is truly valued and has a meaningful impact.

We are also proud to share that Maybanke has been recertified under the Human Services Quality Framework. Maintaining this certification requires an audit every eighteen months to ensure our services, governance and administration meet the highest standards. Preparing for this process is a significant undertaking, and I would like to sincerely thank our staff and Management Committee for their dedication.

At Maybanke, we are committed to continuous improvement, and we view this process as an opportunity to strengthen our standards and keep our practices effective and up to date.

Once again, Dîner en Rouge will be held this year. We are very grateful for the ongoing support this wonderful event provides in raising both funds and awareness. The date is Saturday 6 June, with further details included in this newsletter—we hope to see you there.

Jacky Burkett

In this newsletter you can expect:

President's
report

International
Womens Day

HSQS
Certification

Donation
Information

Coming Events

Case Study



When we give, we gain.

Together, let's help forge gender equality through abundant giving. The IWD 2026 Give To Gain Campaign encourages a mindset of generosity and collaboration.

Give To Gain emphasizes the power of reciprocity and support. When people, organizations, and communities give generously, opportunities and support for women increase. Giving is not a subtraction, it's intentional multiplication.

When women thrive, we all rise.

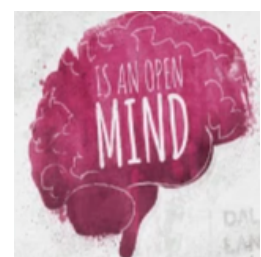
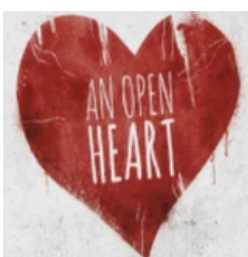
Whether through donations, knowledge, resources, infrastructure, visibility, advocacy, education, training, mentoring, or time, contributing to women's advancement helps create a more supportive and interconnected world.

What will you Give to Gain gender equality?

We can all give our support to gain advancement for women and girls. As individuals, giving support means calling out stereotypes, challenging discrimination, questioning bias, celebrating women's success, and more.

Sharing our knowledge and encouragement with others is also key. Everyday, everywhere, how will you actively give your support to gain gender equality?

Giving requires open hearts and minds.





CERTIFICATE OF REGISTRATION

Human Services Quality Framework Scheme

QUALITY CERTIFIED
OR GAN ISAT IO

This is to certify that

MAYBANKE ASSOCIATION INC T/A MAYBANKE ACCOMMODATION AND CRISIS SUPPORT SERVICES

ABN: 17 817 961 769

At

PO Box 524, Capalaba Qld 4151

Has met the requirements for certification against the Queensland Government's **Human Services Quality Standards 2012** and requirements of the **Human Services Quality Framework User Guide – Certification (version 10.0)** for the provision of the following services:

Services funded by Department of Families, Seniors, Disability Services and Child Safety (DFSDSCS)

Site Address	Funding/program area	Service types and T codes
1 site - Confidential	Domestic and Family Violence Support Services	ST06 / Support - Women's Shelter - Temporary Supported Accommodation - Immediate

Certification No.:	1034.00 (Part 1 of 1)
Issue Date:	24 November 2025
Certification Decision:	20 November 2025
Commencement Date:	16 January 2026 16
Expiry Date:	January 2029 16
Initial Certification:	January 2020

AUTHORISED SIGNATORY
IHCA CERTIFICATION

Registered by the Institute for Healthy Communities Australia Certification Pty Ltd (IHCA Certification) Level 9, 39 Sherwood Road, Toowong, Queensland, Australia, 4066 (ACN 103 006 293) and subject to the Terms and Conditions for Certification.

IHCA Certification is accredited by the Joint Accreditation System of Australia and New Zealand (www.jasanz.org/register).

This certificate remains the property of IHCA Certification and must be returned to IHCA Certification on request.

DONATIONS

Christmas seems like a while time ago but once again we were astonished to receive so many fantastic donations.

Do you know you can now donate online?

Another initiative our committee has delivered in the last 12 months, is an upgrade to our website that now accepts fully tax-deductible donations! Every dollar we receive goes directly to support the women and children in our accommodation. Some examples of what your donation will help contribute to, are:

- **Risk Assessment:** Identifying the level of danger and specific risks faced by the victim.
- **Safety Planning:** Developing personalised safety plans to protect women and children, including emergency contacts and safe places.
- **Counselling:** Providing access to individual counselling for emotional and psychological support.
- **Legal Assistance:** Helping with legal processes, including obtaining protection orders and navigating the court system.
- **Housing Support:** Assisting with finding safe and stable housing, including crisis accommodation and long-term housing solutions.
- **Advocacy:** Representing the interests of women and children in various systems, such as legal, housing, and social services.
- **Medical Support:** Connecting with healthcare providers for physical and mental health needs.
- **Wellbeing Programs:** Providing access to programs that promote overall wellbeing, such as fitness, nutrition, and stress management.
- **Educational Support:** Helping children with school enrolment, daycare, uniforms, supplies, and tutoring.
- **Employment Assistance:** Assisting women with job training, resume building, and job placement services.

Thank you so much for your support! Your donation helps ensure we can support as many women and children fleeing domestic violence. Donations above \$2 are tax deductible.



www.maybanke.org.au

Dîner en Rouge



**RAISING FUNDS TO ASSIST VICTIMS OF
DOMESTIC AND FAMILY VIOLENCE**

YOU'RE INVITED

Book your seat at Dîner en Rouge charity dinner to be held on Saturday 6th June. Now in its twelfth year, the event raises much-needed funds to support Redlands Coast residents affected by domestic and family violence.

WHEN IS THE EVENT

Saturday June 6th 2026

Arrive from 6pm for pre-dinner drinks, with the event commencing at 6.30pm
Entertainment from 9:30pm SisterMISTER

WHERE IS THE EVENT

Redlands Sporting Club, Palms Auditorium, 20 Anson Road Wellington Point.

WHAT DO I WEAR

Dress is formal attire with a red and white theme – red is symbolic of the naturally wonderful Redlands Coast, and white is the colour acknowledged nationally in the campaign to end domestic and family violence.

TICKET PRICES

\$1,700 for a table of 10 tickets (Prices include GST)

Individual tickets also available



HOW TO PURCHASE TICKETS

Purchase tickets through TryBooking:

<https://www.trybooking.com/DJQHT>

Or scan the QR code

Tickets are strictly limited and will sell fast.

Ticket price includes a 3 course meal and drinks
(House beer, wine & softdrink)

Redlands Coast Candle Lighting Vigil

When	Wednesday, 6 May 2026 — 5:00pm ceremony (vigil runs until 6:30pm)
Where	Raby Bay Harbour Park, 146–148 Shore Street, Cleveland QLD 4163
Cost	Free Open to all ages

Each year in Australia, more than 100 women, children and men lose their lives to domestic and family violence. This vigil remembers those who have died and acknowledges the profound impact on families, loved ones and children left behind.

The Redlands Coast Candle Lighting Vigil will be held simultaneously with others across Queensland to mark the beginning of **Domestic and Family Violence Prevention Month**, lighting up the state in remembrance.

The ceremony is a respectful memorial service supported by all levels of government, local domestic and family violence service groups, police and emergency services.

'Walk the Talk' — Join the March

Walk with the **Zonta Club of Wynnum Redland** and **Soroptimist International Bayside** to show your support to eliminate domestic and family violence.

Time	Activity
4:45pm	Meet at Kyling Corner (Cnr Waterloo & Middle Streets, Cleveland)
5:00pm	Walk as a united group to Raby Bay Harbour Park
5:30pm	Attend the Redlands Coast Candle Lighting Vigil





Case Study - March 2025

Accommodation and Crisis Support for a Culturally Diverse Family Experiencing Domestic and Family Violence

Demographics

- Mother aged 29 pregnant and from the Republic of Congo
- Females children aged 8 & 6

Our service responded to a referral from 99 Steps. for Emily, a single mother who were fleeing severe domestic and family violence. The family, originally from the Republic of Congo, arrived in Australia in 2023 on a Humanitarian Visa. They had limited English proficiency and required Swahili interpreters to ensure safe and meaningful engagement with services.

Emily reported experiencing significant violence perpetrated by her mother and sister. This included having objects thrown at her while heavily pregnant, being chased from the home toward oncoming traffic, and being subjected to coercive control. Emily and her children were prevented from leaving the upper level of the property, placing them at heightened risk and significantly impacting their safety and wellbeing.

Key Interventions and Outcomes

Upon arrival at Maybanke, staff prioritised immediate safety and stabilisation. Case workers supported Emily to complete a Form 20 to terminate her lease on the grounds of domestic and family violence, enabling the family to safely exit the property without ongoing financial or legal burden.

Access to Medical Support

Given the imminent birth of the baby, Maybanke staff worked collaboratively with Emily to develop an immediate care and safety plan. A trusted friend was identified as a safe support person to care for the two children while the mother attended hospital for labour and delivery.

Maybanke staff coordinated practical and material supports to meet the family's urgent needs. Referrals were made to Baby Give Back to access baby clothing, nappies, and essential items.

Maybanke also provided financial assistance to purchase a pram and supplied a cot onsite.

Shortly after entering the service, a baby boy was safely born while the family was supported at Maybanke. Staff assisted Emily with registering the birth and obtaining the baby's birth certificate to ensure access to essential services and entitlements.

Enrolment in School

In addition to crisis support, staff focused on restoring routine and stability for the children. Maybanke assisted the family in enrolling the two girls at a local school and submitted referrals to Zephyr to support access to school uniforms and supplies. To further support Emily's capacity to attend appointments and manage competing responsibilities, staff assisted with arranging after-school care for the children three days per week, including support to access Additional Child Care Subsidy (ACCS).

Health and Wellbeing

Health and wellbeing were addressed through coordinated and ongoing support. Maybanke staff assisted the family in sourcing and attending medical and dental appointments, ensuring the children's immunisations and dental checks were up to date. Staff also supported Emily in navigating medical care for her newborn, including assistance during treatment for a medical hernia.

Practical Barriers

Recognising practical barriers faced by the family, Maybanke provided transport support to assist with the collection of large grocery items, including bottled water, as the mother was unable to drink tap water due to health concerns. Case workers also supported the mother in accessing financial assistance through Centrelink, including Crisis Payments, Disaster Payments, and the Escaping Violence Payment. Following the birth of the baby, staff assisted with updating Centrelink payments and applying for child support, ensuring the family had ongoing financial stability.

Housing and Furniture

Long-term housing stability was a key focus of ongoing case management. Maybanke supported the family to register with the Department of Housing, resulting in a successful application for a three-bedroom property. Staff then facilitated referrals to Redlands Care Coordination, enabling collaboration with QShelter, Settlement Services International (SSI), and Multicultural Australia. Through coordinated advocacy and culturally responsive support, Maybanke and Multicultural Australia were able to secure a three-bedroom private rental located close to culturally familiar shops and community supports. Following approval of a bond loan through the Department of Housing, Maybanke referred the family to RiseUp, where volunteers delivered new furniture to fully establish the home. This transition marked the family's successful move from crisis accommodation into safe, stable, and independent housing.

Conclusion

This case demonstrates the importance of timely, trauma-informed, and culturally responsive service delivery. Through coordinated advocacy, practical support, and strong interagency collaboration, Maybanke supported the family to achieve safety, stability, and a positive pathway forward.

There are many agencies which can provide emergency assistance or advice.

DV Connect Phone Ph:1800 811 811 (24 hour free call)

CRISIS SERVICES

1800 Respect (24hours) National Sexual Assault, Domestic Family Violence

Counselling Ph: 188 737 732

Lifeline Crisis Support Service (24 hours) Ph:13 11 14

Kids Helpline 5-25 years (24 hours) Ph: 1800 551 800

Beyond Blue Ph: 1300 234 636 (24 hours)

WOMEN'S SERVICES

Brisbane Domestic Violence Service (BDVS 24 hour) Ph: 3217 2544

Immigrant Women's Support Service (IWSS) Ph: 3846 3490

INDIGENOUS SERVICES

13YARN – Free and confidential service 24 hours Ph: 13 92 76

